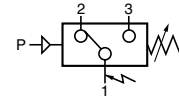


# ADJUSTABLE PRESSURE SWITCH

**JOUCOMATIC™**

with or without protection and status indicators  
G 1/4 or subbase mounted body



Series  
**349**

## GENERAL

### PROTECTION

### AND STATUS INDICATORS

	WITHOUT	WITH
FLUID	: air ou gaz neutre, filtré, lubrifié ou non	
PRESSURE SETTING	: 0,5 to 10 bar (0,2 - 6 bar on request)	
HYSTERESIS	: 0,4 bar at the beginning of adjustment range 1 bar at the end of adjustment range	

MAX. PRESSURE (PMA)	: 10 bar or 16 bar	
OPERATING TEMPERATURE	: -10°C; +60°C	: 0°C, +60°C
MAX. VOLTAGE	: 250 V - CA/CC	: 24 Volts-courant continu
CURRENT BREAKING CAPACITY	: 5A - 250V resistive	: 2A - 24Vcc resistive
PROTECTION DEGREE	: IP65	
MOUNTING POSITIONS	: all positions	
MAX. SPEED	: 60 cycles per minute	

## CONSTRUCTION

Grivory (PA61/XT) body / aluminium body for 16 bar version

Nitrile (NBR) sealings

Commutator (reversing switch) •at rest : contact 1 - 2 made  
•at work : contact 1 - 3 made

Mechanical service life : 5.10<sup>6</sup> contacts

Pressure set by set screw and lock-nut

## SPECIFICATIONS

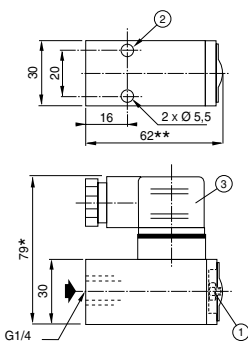
Type	Designation	Pressure setting (bar)	catalogue number	
			Without protection	With protection
	Adjustable pressure switch with side pneumatic connection, <b>tapped</b> G1/4	0,2 - 6	<b>34900015</b>	-
		0,5 - 10	<b>34900018</b>	<b>34900019</b>
		0,5 - 16	<b>34900021</b>	-
	Adjustable pressure switch with <b>subbase mounted</b> pneumatic connection (version adaptable on FRL, see P710)	0,5 - 10	<b>34900030</b>	<b>34900031</b>

## DIMENSIONS AND WEIGHT

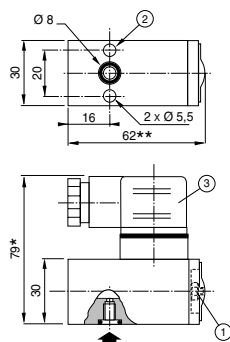
Weight : 110 g

Version **without** protection and status indicators

### Tapped

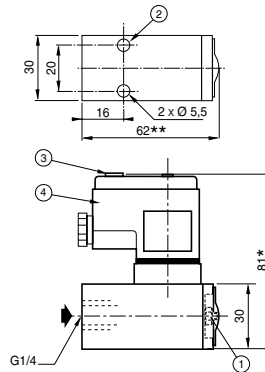


### subbase mounted

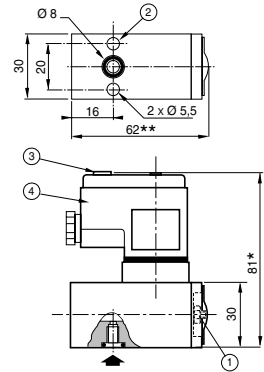


Version **with** protection and status indicators

### Tapped

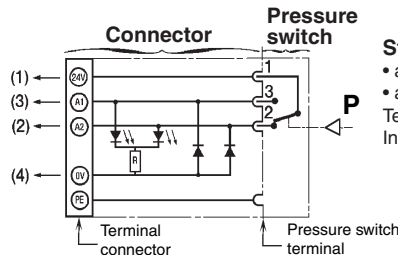


### subbase mounted



- ① Pressure set screw (spanner for hexagon nuts : 3 mm)
- ② 2 holes Ø 5,5 for mounting
- ③ ISO4400 size 30 connector, 4 terminals, rotatable by 90°
- \* + 15 mm for connector clearance
- \*\* + 2 mm for 0,5 - 16 bar version

## ELECTRICAL DIAGRAM



**Status indicated by two diodes :**

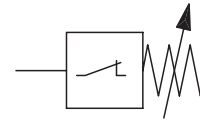
- at rest : contact 1-2 made : orange diode lights
- at work : contact 1-3 made : red diode lights

Terminal connection for 1,5 mm<sup>2</sup> wire  
Integrated interference blanking

- ① Pressure set screw (spanner for hexagon nuts : 3 mm)
- ② 2 holes Ø 5,5 for mounting
- ③ Identification label holder
- ④ ISO 4400 size 30 connector, 4 terminals (not rotatable)
- \* +15 mm for connector clearance
- \*\* + 2 mm for 0,5 - 16 bar version

All leaflets are available on: [www.asconumatics.eu](http://www.asconumatics.eu)

P918-1



**GENERAL**

**Fluid** Air or neutral gas, filtered, lubricated or dry  
**Maximum allowable pressure (MPA)** 16 bar  
**Control range** 0 - 10 bar  
**Fluid temperature** -10°C to +60°C  
**Max. speed** 60 cycles per minute  
**Hysteresis** 0,2 bar at the beginning of control range  
**Mechanical service life** 10<sup>6</sup> contacts  
**Mounting positions** All positions

**CONSTRUCTION**

**Body** Steel  
**Seals** FPM (fluoroelastomer)  
**Pressure set** By set screw

**ELECTRICAL CHARACTERISTICS**

**Max. switched voltage** 48 V CC  
**Max. switched current** 0,5 A  
**Electric contact** Plated silver

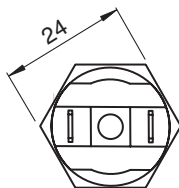
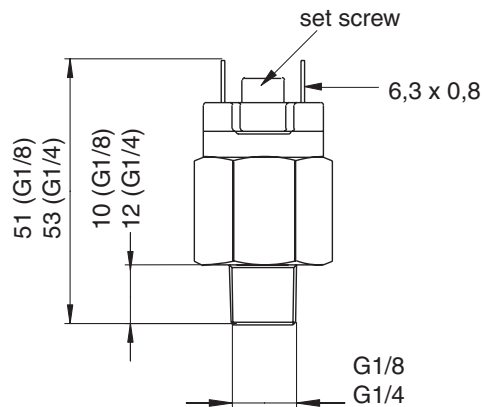


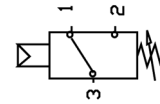
**SPECIFICATIONS**

designation		control range (bar)	maximum allowable pressure (MAP) (bar)	catalogue number
Diaphragm pressure switch, NC, adjustable, pneumatic connection	G 1/8	1 - 10	16	34900048
	G 1/4			34900049

**DIMENSIONS (mm), WEIGHT (kg)**

<b>weight</b>
0,065





**GENERAL**

FLUID : Air, water, alkali, brake liquid, ammonia, ethylene glycol, silicone, ketone  
 MAX. FLUID TEMPERATURE : 120 °C  
 ANTICIPATED MIN. CYCLES : 1 million  
 PROTECTION CLASS : IP 65  
 HYSTERESIS : 15 to 30 % of setting value

**SPECIFICATION**

WEIGHT : 180 gr max.  
 CASE : Anodized aluminium  
 THREADED FITTING : Passivated AVP steel  
 DIAPHRAGM : EPDM  
 CONNECTOR : 30 mm DIN EN 175301-803 (old DIN 43650) Form A

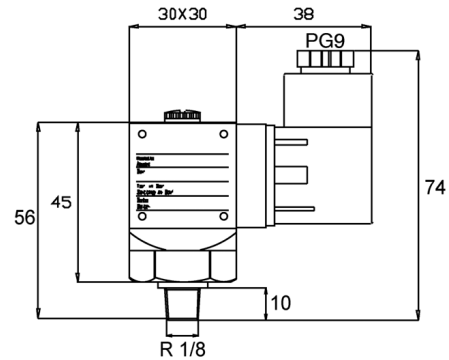
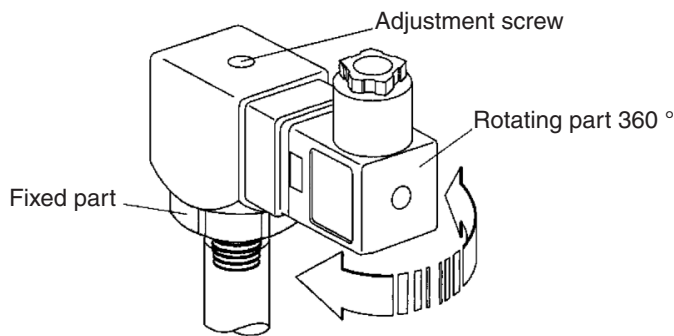
**ELECTRICAL CHARACTERISTICS**

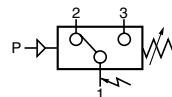
MAX. SWITCHED VOLTAGE : 250 VAC  
 MAX. SWITCHED CURRENT : 5 (1) A



Thread	R	Setting range (bar)	Tolerance at 20 °C	Static pressure max. (bar)	Order Code *
1/8		0.2-1	± 0.1	100	PS2420231
1/8		1-5	± 0.3	100	PS2420232
1/8		1-16	± 0.5	150	PS2420233
1/8		10-50	± 2	150	PS2420234

\*delivered with connector





## GENERAL

FLUID : air or neutral gas, filtered, not lubricated, free of condensate  
 CONNECTION : G1/8  
 PRESSURE RANGE : 0 to 10 bar  
 MAX. OVERPRESSURE : 15 bar  
 OPERATING TEMPERATURE : 0°C, +50°C (storage: -20°C, +60°C)  
 ELECTRICAL CONNECTION : 4-pin M8 connector  
 SUPPLY VOLTAGE : 12 to 24 volts, max. ripple 10%, reverse voltage protection  
 CONSUMPTION : < 55mA  
 VOLTAGE SPIKE : 350 V Peak, 1µs  
 ACCURACY : +/- 200 mbar (2% of full range)  
 DIGITAL DISPLAY : 3-digit - 7 segments - display frequency : 5 Hz  
 UNITS OF MEASURE : bar - psi - MPa - kgf/cm<sup>2</sup>  
 OUTPUTS : 2 PNP outputs selectable NO or NC,  
 max. load current 80mA,  
 30V, with overcurrent protection, status indication by LED

## 2 OUTPUT MODES

- hysteresis 0 to 100 % of full range

- window comparator: 2 limit values adjustable over full range

< 2,5 ms - 24ms - 192ms - 768ms

: IP65

: 10 to 55 Hz, 1.5 mm, XYZ, 2 hours

: 980m/s<sup>2</sup> (100G), XYZ

## CARACTERISTICS

Recording of peak value and bottom value

Lockout feature

## CONSTRUCTION

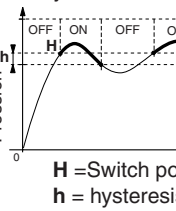
Polycarbonate body (PC)

Nitrile (NBR) sealings



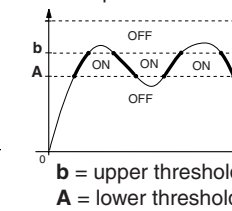
## OPERATING

Hysteresis mode



H = Switch point  
h = hysteresis

Comparator mode



b = upper threshold  
A = lower threshold

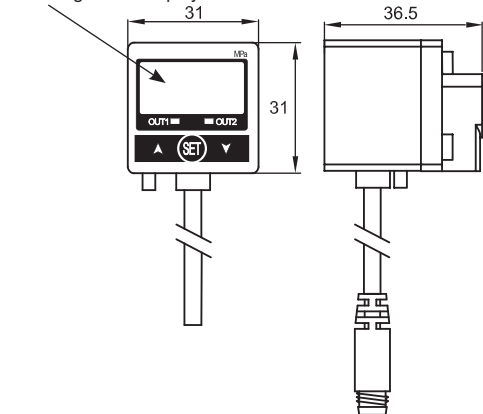
## SPECIFICATIONS

description	catalogue number
electronic pressure switch with digital display adjustable from 0 to 10 bar, pneumatic connection G1/8 (delivered with 2 brackets, 1 plug G1/8)	34900050
panel mounting kit for electronic presure switch	88100967
straight female connector Ø M8, 4 wires, IP65, with 5 m PVC lead (other end plain)	88157771

## DIMENSIONS AND WEIGHT

Weight: 105 g

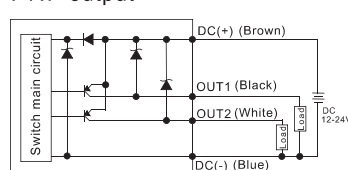
3 1/2" digit LED Display



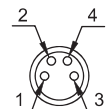
## ELECTRICAL DIAGRAM

Pressure switch User connection

PNP output



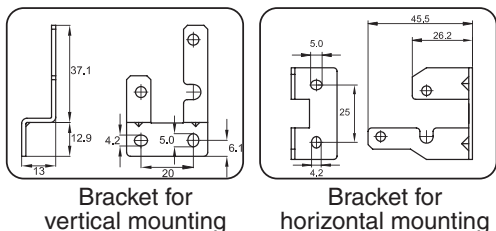
## ELECTRICAL CONNECTION



- 1 = brown (V +)
- 2 = white (output 2)
- 3 = blue (V -)
- 4 = black (output 1)

## ACCESSORIES

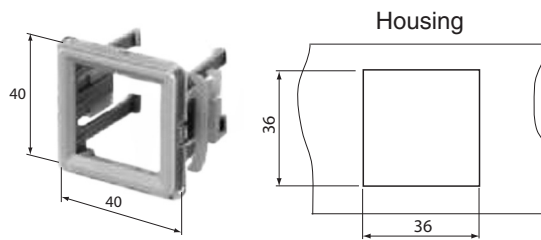
### BRACKET MOUNTING



Bracket for vertical mounting

Bracket for horizontal mounting

### PANEL MOUNTING KIT



Housing